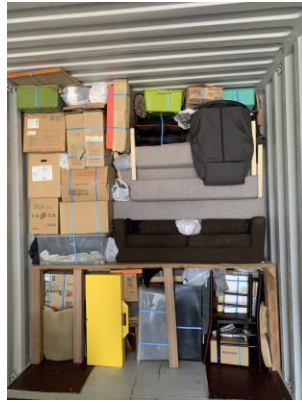


LOADING (VANNING)

- We load prepared products into 40ft HQ container
- We efficiently utilize the space by stacking products tightly from floor to ceiling.
- To prevent damage to the products, we load them carefully, inserting cushions or clothing as needed during the stacking process.
- When loading large, irregularly shaped ornaments, we first place them on the floor. Then, using boards and multiple supports, we create a bridge over them and proceed to stack more products on top of the boards.



Example1



Example2



OUR WORK

